

年度	83	84	85	86	87	88	89	90
人件費	2,761,385	2,975,371	3,304,842	3,109,190	3,240,791	3,236,138	3,765,222	3,700,266
うち職員給	2,049,940	2,128,495	2,235,717	2,322,290	2,313,886	2,399,405	2,492,611	2,661,008
扶助費	2,431,033	2,508,573	2,598,449	2,393,171	2,347,653	2,211,605	2,152,222	2,219,448
公債費	1,073,700	1,098,420	1,155,008	1,232,164	1,369,369	1,292,341	1,342,676	1,459,509
元利償還金	1,037,863	1,078,427	1,146,644	1,228,785	1,365,891	1,289,390	1,340,864	1,459,020
一時借入金利息	35,837	19,993	8,364	3,379	3,478	2,951	1,812	489
義務的経費小計	6,266,118	6,582,364	7,058,299	6,734,525	6,957,813	6,740,084	7,260,120	7,379,223
物件費	694,671	722,141	771,631	884,640	908,113	1,022,365	1,216,921	1,150,474
維持補修費	146,641	143,549	163,059	172,809	173,756	206,169	140,375	152,844
補助費等	1,211,059	1,337,413	1,385,787	1,361,447	1,372,149	1,422,651	1,521,500	1,560,869
うち一部事務組合負担金(うち組合分)	653,465	743,284	789,790	807,602	820,265	905,550	971,031	975,280
(うち組合分以外)								
繰出金	180,580	147,068	261,148	170,699	608,149	348,618	352,677	839,747
積立金	791,427	558,260	514,632	747,391	892,449	1,965,137	658,618	1,797,014
投資・出資金・貸付金	271,417	370,343	409,489	611,982	471,819	343,670	352,330	446,113
投資及び出資金								
貸付金								
前年度繰上充用金				0	0	0	0	0
投資的経費	4,799,746	4,665,980	4,066,520	5,013,513	4,438,856	5,458,236	6,341,727	7,997,035
うち人件費	43,345	45,024	42,333	48,696	80,862	84,786	106,541	126,308
普通建設事業費	4,029,551	4,205,837	3,647,641	4,310,094	4,170,563	5,216,964	6,108,005	7,678,521
補助	2,211,962	2,383,452	1,827,897	2,329,147	1,869,561	1,284,601	1,499,854	2,085,987
単独	1,817,589	1,665,408	1,692,512	1,830,720	2,093,380	3,702,225	4,608,151	5,592,534
うち単独+県営								
災害普及事業費	506,835	197,360	188,959	313,595	69,458	64,257	80,494	180,835
失業対策事業費	263,360	262,783	229,920	388,823	198,835	177,015	153,228	137,679
合計	14,361,659	14,527,118	14,630,565	15,696,005	15,823,104	17,506,930	17,844,268	21,323,319

	83	84	85	86	87	88	89	90
人件費	27.6	29.8	33.0	31.1	32.4	32.4	37.7	37.0
扶助費	24.3	25.1	26.0	23.9	23.5	22.1	21.5	22.2
公債費	10.7	11.0	11.6	12.3	13.7	12.9	13.4	14.6
物件費	6.9	7.2	7.7	8.8	9.1	10.2	12.2	11.5
維持補修費	1.5	1.4	1.6	1.7	1.7	2.1	1.4	1.5
補助費等	12.1	13.4	13.9	13.6	13.7	14.2	15.2	15.6
繰出金	1.8	1.5	2.6	1.7	6.1	3.5	3.5	8.4
積立金	7.9	5.6	5.1	7.5	8.9	19.7	6.6	18.0
投資・出資金・貸付金	2.7	3.7	4.1	6.1	4.7	3.4	3.5	4.5
普通建設事業費	40.3	42.1	36.5	43.1	41.7	52.2	61.1	76.8
合計	143.6	145.3	146.3	157.0	158.2	175.1	178.4	213.2

	83	84	85	86	87	88	89	90
義務的経費小計	62.7	65.8	70.6	67.3	69.6	67.4	72.6	73.8
投資的経費	40.3	42.1	36.5	43.1	41.7	52.2	61.1	76.8

91	92	93	94	95	96	97	98	99
4,150,544	4,186,797	4,344,231	4,409,660	4,843,580	4,638,177	4,751,121	4,751,205	4,545,405
2,811,008	2,878,318	2,995,730	30,873,963	3,141,751	3,166,224	3,215,177	3,267,140	3,178,994
2,282,128	2,448,374	2,431,616	2,534,246	2,693,338	2,717,171	2,865,518	2,993,256	3,157,564
1,725,564	1,956,511	2,421,502	2,571,109	2,554,464	2,669,214	2,793,426	2,962,954	3,043,497
1,723,979	1,956,511	2,421,502	2,571,109	2,554,464	2,669,214	2,793,211	2,962,018	3,043,497
1,585						215	936	0
8,158,236	8,591,682	9,197,349	9,515,015	10,091,382	10,024,562	10,410,065	10,707,415	10,746,466
1,449,161	1,523,025	1,673,233	1,760,328	1,949,765	2,216,229	2,344,155	2,418,795	2,506,238
163,529	185,783	227,546	249,344	232,658	239,813	280,253	286,557	318,998
1,796,068	1,929,716	2,183,838	2,548,986	2,538,344	2,875,772	3,058,341	3,288,107	3,983,165
1,052,100	1,140,088	1,310,035	1,358,023	1,379,334	1,523,987	1,571,400	1,818,315	2,097,122
672,815	809,586	626,261	803,445	1,054,700	1,145,438	780,829	793,052	868,337
2,717,122	803,987	1,243,726	475,893	336,994	312,137	342,747	496,518	465,605
610,140	332,776	325,682	317,357	317,834	656,131	831,693	391,308	322,984
0	0	0	0	0	0	0	0	0
7,628,610	6,633,912	5,560,870	6,375,579	7,182,533	7,599,002	7,050,231	7,606,625	9,366,447
136,552	146,634	123,585	119,461	120,859	120,101	119,678	120,988	142,999
7,371,264	6,476,074	5,191,307	6,003,475	6,908,473	7,548,702	6,883,064	7,479,884	9,279,630
2,330,737	1,745,713	1,625,588	2,032,726	2,676,751	3,056,094	2,424,205	2,719,781	2,487,501
5,040,527	4,730,361	3,565,719	3,970,749	4,231,722	4,490,608	4,458,859	4,760,103	6,792,129
135,558	85,792	314,622	320,500	214,046	50,300	167,167	126,741	86,817
121,788	72,046	54,941	51,604	60,014	0	0		
23,195,681	20,810,467	21,038,505	22,045,947	23,704,210	25,069,084	25,098,314	25,988,377	28,578,240

91	92	93	94	95	96	97	98	99
41.5	41.9	43.4	44.1	48.4	46.4	47.5	47.5	45.5
22.8	24.5	24.3	25.3	26.9	27.2	28.7	29.9	31.6
17.3	19.6	24.2	25.7	25.5	26.7	27.9	29.6	30.4
14.5	15.2	16.7	17.6	19.5	22.2	23.4	24.2	25.1
1.6	1.9	2.3	2.5	2.3	2.4	2.8	2.9	3.2
18.0	19.3	21.8	25.5	25.4	28.8	30.6	32.9	39.8
6.7	8.1	6.3	8.0	10.5	11.5	7.8	7.9	8.7
27.2	8.0	12.4	4.8	3.4	3.1	3.4	5.0	4.7
6.1	3.3	3.3	3.2	3.2	6.6	8.3	3.9	3.2
73.7	64.8	51.9	60.0	69.1	75.5	68.8	74.8	92.8
232.0	208.1	210.4	220.5	237.0	250.7	251.0	259.9	285.8

91	92	93	94	95	96	97	98	99
81.6	85.9	92.0	95.2	100.9	100.2	104.1	107.1	107.5
73.7	64.8	51.9	60.0	69.1	75.5	68.8	74.8	92.8

00	01	02	03	04	05	06	07	08	09	10
4,643,300	4,775,032	4,717,940	4,759,387	10,462,940	9,841,554	9,654,395	10,122,202	9,864,735		
3,187,626	3,192,762	3,100,028	2,974,586	6,709,081	6,829,370	6,635,615	6,731,116	6,459,267		
2,700,276	2,843,222	3,097,564	3,519,336	4,721,666	5,110,927	5,242,421	5,506,284	5,509,208		
2,999,129	2,902,664	2,813,288	2,865,697	5,481,633	5,856,707	6,025,908	6,464,999	6,827,570	0	0
2,999,098	2,902,664	2,813,101	2,865,092	5,477,850	5,856,707	6,025,908	6,464,212	6,827,570		
31	0	187	605	3,783	0	0	787	0		
10,342,705	10,520,918	10,628,792	11,144,420	20,666,239	20,809,188	20,922,724	22,093,485	22,201,513	0	0
2,695,604	3,022,459	3,015,975	3,264,687	6,745,722	5,826,673	5,542,913	5,554,845	5,614,678		
391,368	397,869	404,631	380,298	524,493	644,057	665,576	844,050	814,378		
3,291,161	3,300,142	3,257,372	2,968,400	3,612,903	2,736,210	2,982,119	2,715,076	3,454,011	0	0
1,897,343	1,874,319	1,839,610	1,596,000	393,898	415,079	605,370	556,591	592,952		
								0		
1,262,023	1,318,652	1,427,914	1,515,627	3,000,847	3,214,412	2,942,024	3,643,619	3,138,272		
334,831	241,826	242,818	188,577	2,018,733	1,444,396	1,840,590	1,336,844	894,342		
339,882	509,312	546,135	408,773	310,880	793,416	578,300	311,300	255,734	0	0
0	0	0	0	0	0	0	0	0		
6,112,078	4,795,042	3,492,673	3,177,158	15,480,104	5,430,979	7,863,148	5,301,919	5,813,850	0	0
113,977	103,170	62,012	50,529	241,794	80,784	130,302	74,680	84,086		
6,026,419	4,719,777	3,476,855	3,127,969	15,297,088	5,345,438	7,712,115	5,141,962	5,781,647		
1,792,385	1,005,825	1,020,850	864,567	5,253,409	1,731,536	2,129,766	2,589,762	2,615,083		
4,234,034	3,480,883	229,586	2,081,601	9,420,687	3,190,734	5,280,872	2,552,200	3,166,564		
0										
85,659	75,265	15,818	49,189	183,016	85,541	151,033	159,957	32,203		
	0	0	0	0	0	0	0	0		
24,769,652	24,106,220	23,016,310	23,047,940	52,359,921	40,899,331	43,337,394	41,801,138	42,186,778	0	0

00	01	02	03	04	05	06	07	08	09	10
46.4	47.8	47.2	47.6	104.6	98.4	96.5	101.2	98.6	0.0	0.0
27.0	28.4	31.0	35.2	47.2	51.1	52.4	55.1	55.1	0.0	0.0
30.0	29.0	28.1	28.7	54.8	58.6	60.3	64.6	68.3	0.0	0.0
27.0	30.2	30.2	32.6	67.5	58.3	55.4	55.5	56.1	0.0	0.0
3.9	4.0	4.0	3.8	5.2	6.4	6.7	8.4	8.1	0.0	0.0
32.9	33.0	32.6	29.7	36.1	27.4	29.8	27.2	34.5	0.0	0.0
12.6	13.2	14.3	15.2	30.0	32.1	29.4	36.4	31.4	0.0	0.0
3.3	2.4	2.4	1.9	20.2	14.4	18.4	13.4	8.9	0.0	0.0
3.4	5.1	5.5	4.1	3.1	7.9	5.8	3.1	2.6	0.0	0.0
60.3	47.2	34.8	31.3	153.0	53.5	77.1	51.4	57.8	0.0	0.0
247.7	241.1	230.2	230.5	523.6	409.0	433.4	418.0	421.9	0.0	0.0

00	01	02	03	04	05	06	07	08	09	10
103.4	105.2	106.3	111.4	206.7	208.1	209.2	220.9	222.0	0.0	0.0
60.3	47.2	34.8	31.3	153.0	53.5	77.1	51.4	57.8	0.0	0.0

年度	85	86	87	88	89	90	91	92	93	94	95	96	97
人件費	3,304,842	3,109,190	3,240,791	3,236,138	3,765,222	3,700,266	4,150,544	4,186,797	4,344,231	4,409,660	4,843,580	4,638,177	4,751,121
うち職員給	2,235,717	2,322,290	2,313,886	2,399,405	2,492,611	2,661,008	2,811,008	2,878,318	2,995,730	30,873,963	3,141,751	3,166,224	3,215,177
扶助費	2,598,449	2,393,171	2,347,653	2,211,605	2,152,222	2,219,448	2,282,128	2,448,374	2,431,616	2,534,246	2,693,338	2,717,171	2,865,518
公債費	1,155,008	1,232,164	1,369,369	1,292,341	1,342,676	1,459,509	1,725,564	1,956,511	2,421,502	2,571,109	2,554,464	2,669,214	2,793,426
元利償還金	1,146,644	1,228,785	1,365,891	1,289,390	1,340,864	1,459,020	1,723,979	1,956,511	2,421,502	2,571,109	2,554,464	2,669,214	2,793,211
一時借入金利息	8,364	3,379	3,478	2,951	1,812	489	1,585						215
義務の経費小計	7,058,299	6,734,525	6,957,813	6,740,084	7,260,120	7,379,223	8,158,236	8,591,682	9,197,349	9,515,015	10,091,382	10,024,562	10,410,065
物件費	771,631	884,640	908,113	1,022,365	1,216,921	1,150,474	1,449,161	1,523,025	1,673,233	1,760,328	1,949,765	2,216,229	2,344,155
維持補修費	163,059	172,809	173,756	206,169	140,375	152,844	163,529	185,783	227,546	249,344	232,658	239,813	280,253
補助費等	1,385,787	1,361,447	1,372,149	1,422,651	1,521,500	1,560,869	1,796,068	1,929,716	2,183,838	2,548,986	2,538,344	2,875,772	3,058,341
事務組合負担金(うち組合分)	789,790	807,602	820,265	905,550	971,031	975,280	1,052,100	1,140,088	1,310,035	1,358,023	1,379,334	1,523,987	1,571,400
(うち組合分以外)													
繰出金	261,148	170,699	608,149	348,618	352,677	839,747	672,815	809,586	626,261	803,445	1,054,700	1,145,438	780,829
積立金	514,632	747,391	892,449	1,965,137	658,618	1,797,014	2,717,122	803,987	1,243,726	475,893	336,994	312,137	342,747
投資・出資金・貸付金	409,489	611,982	471,819	343,670	352,330	446,113	610,140	332,776	325,682	317,357	317,834	656,131	831,693
投資及び出資金													
貸付金													
前年度繰上充用金	0	0	0	0	0	0	0	0	0	0	0	0	0
投資の経費	4,066,520	5,012,512	4,438,856	5,458,236	6,341,727	7,997,035	7,628,610	6,633,912	5,560,870	6,375,579	7,182,533	7,599,002	7,050,231
うち人件費	42,333	48,696	80,862	84,786	106,541	126,308	136,552	146,634	123,585	119,461	120,859	120,101	119,678
普通建設事業費	3,647,641	4,310,094	4,170,563	5,216,964	6,108,005	7,678,521	7,371,264	6,476,074	5,191,307	6,003,475	6,908,473	7,548,702	6,883,064
補助	1,827,897	2,329,147	1,869,561	1,284,601	1,499,854	2,085,987	2,330,737	1,745,713	1,625,588	2,032,726	2,676,751	3,058,094	2,424,205
単独	1,692,512	1,830,720	2,093,380	3,702,225	4,608,151	5,592,534	5,040,527	4,730,361	3,565,719	3,970,749	4,231,722	4,490,608	4,458,859
うち単独+県営													
災害普及事業費	188,959	313,595	69,458	64,257	80,494	180,835	135,558	85,792	314,622	320,500	214,046	50,300	167,167
失業対策事業費	229,920	388,823	198,835	177,015	153,228	137,679	121,788	72,046	54,941	51,604	60,014	0	0
合計	14,630,565	15,696,005	15,823,104	17,506,930	17,844,268	21,323,319	23,195,681	20,810,467	21,038,505	22,045,947	23,704,210	25,069,084	25,098,314

	85	86	87	88	89	90	91	92	93	94	95	96	97
人件費	33.0	31.1	32.4	32.4	37.7	37.0	41.5	41.9	43.4	44.1	48.4	46.4	47.5
扶助費	26.0	23.9	23.5	22.1	21.5	22.2	22.8	24.5	24.3	25.3	26.9	27.2	28.7
公債費	11.6	12.3	13.7	12.9	13.4	14.6	17.3	19.6	24.2	25.7	25.5	26.7	27.9
物件費	7.7	8.8	9.1	10.2	12.2	11.5	14.5	15.2	16.7	17.6	19.5	22.2	23.4
維持補修費	1.6	1.7	1.7	2.1	1.4	1.5	1.6	1.9	2.3	2.5	2.3	2.4	2.8
補助費等	13.9	13.6	13.7	14.2	15.2	15.6	18.0	19.3	21.8	25.5	25.4	28.8	30.6
繰出金	2.6	1.7	6.1	3.5	3.5	8.4	6.7	8.1	6.3	8.0	10.5	11.5	7.8
積立金	5.1	7.5	8.9	19.7	6.6	18.0	27.2	8.0	12.4	4.8	3.4	3.1	3.4
投資・出資金・貸付金	4.1	6.1	4.7	3.4	3.5	4.5	6.1	3.3	3.3	3.2	3.2	6.6	8.3
普通建設事業費	36.5	43.1	41.7	52.2	61.1	76.8	73.7	64.8	51.9	60.0	69.1	75.5	68.8
合計	146.3	157.0	158.2	175.1	178.4	213.2	232.0	208.1	210.4	220.5	237.0	250.7	251.0

	85	86	87	88	89	90	91	92	93	94	95	96	97
義務の経費小計	70.6	67.3	69.6	67.4	72.6	73.8	81.6	85.9	92.0	95.2	100.9	100.2	104.1
投資の経費	36.5	43.1	41.7	52.2	61.1	76.8	73.7	64.8	51.9	60.0	69.1	75.5	68.8

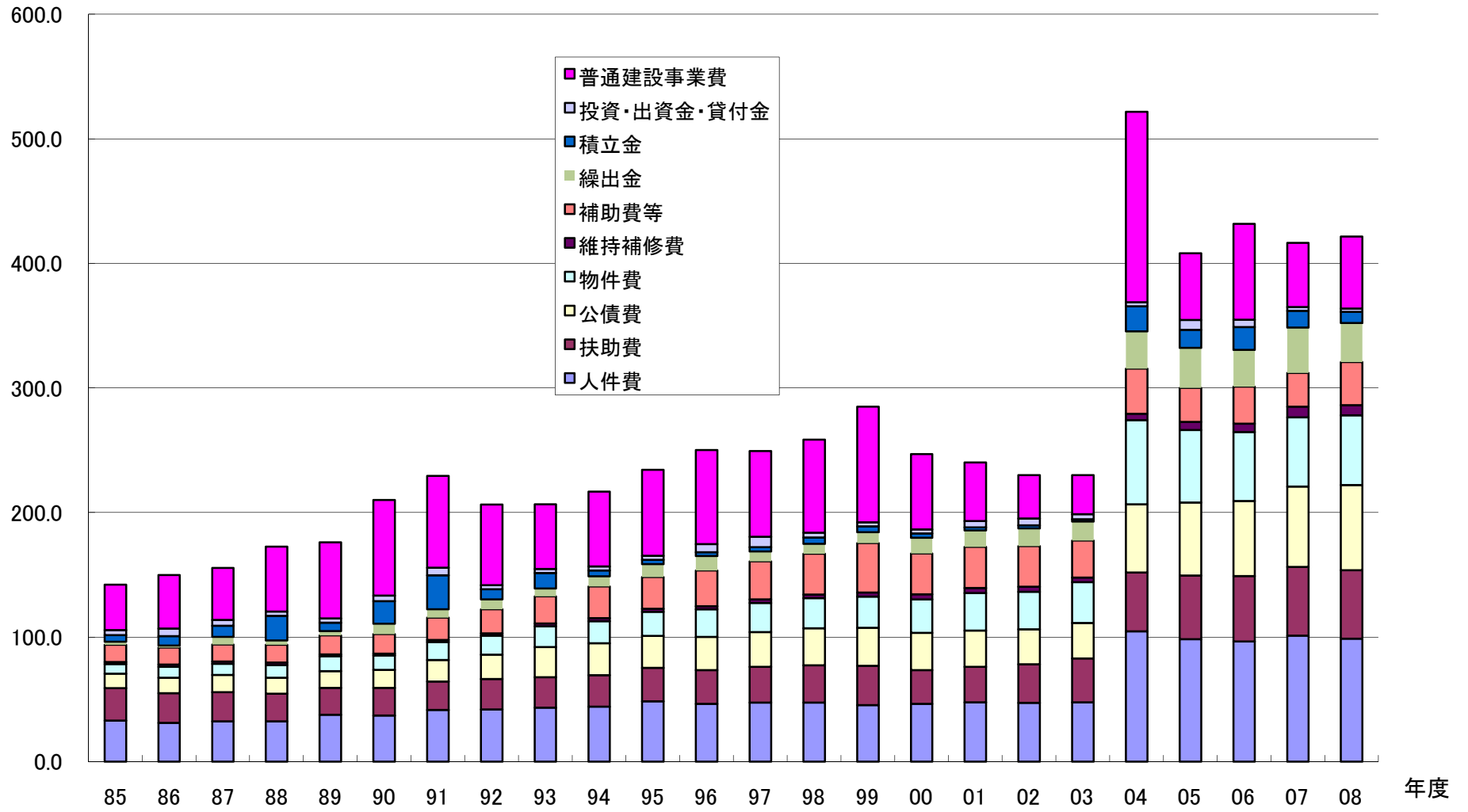
98	99	00	01	02	03	04	05	06	07	08	09	10
4,751,205	4,545,405	4,643,300	4,775,032	4,717,940	4,759,387	10,462,940	9,841,554	9,654,395	10,122,202	9,864,735		
3,267,140	3,178,994	3,187,626	3,192,762	3,100,028	2,974,586	6,709,081	6,829,370	6,635,615	6,731,116	6,459,267		
2,993,256	3,157,564	2,700,276	2,843,222	3,097,564	3,519,336	4,721,666	5,110,927	5,242,421	5,506,284	5,509,208		
2,962,954	3,043,497	2,999,129	2,902,664	2,813,288	2,865,697	5,481,633	5,856,707	6,025,908	6,464,999	6,827,570	0	0
2,962,018	3,043,497	2,999,098	2,902,664	2,813,101	2,865,092	5,477,850	5,856,707	6,025,908	6,464,212	6,827,570		
936	0	31	0	187	605	3,783	0	0	787	0		
10,707,415	10,746,466	10,342,705	10,520,918	10,628,792	11,144,420	20,666,239	20,809,188	20,922,724	22,093,485	22,201,513	0	0
2,418,795	2,506,238	2,695,604	3,022,459	3,015,975	3,264,687	6,745,722	5,826,673	5,542,913	5,554,845	5,614,678		
286,557	318,998	391,368	397,869	404,631	380,298	524,493	644,057	665,576	844,050	814,378		
3,288,107	3,983,165	3,291,161	3,300,142	3,257,372	2,968,400	3,612,903	2,736,210	2,982,119	2,715,076	3,454,011	0	0
1,818,315	2,097,122	1,897,343	1,874,319	1,839,610	1,596,000	393,898	415,079	605,370	556,591	592,952		
793,052	868,337	1,262,023	1,318,652	1,427,914	1,515,627	3,000,847	3,214,412	2,942,024	3,643,619	3,138,272		
496,518	465,605	334,831	241,826	242,818	188,577	2,018,733	1,444,396	1,840,590	1,336,844	894,342		
391,308	322,984	339,882	509,312	546,135	408,773	310,880	793,416	578,300	311,300	255,734	0	0
			0	0	0	0	0	0	0	0		
			0	0	0	0	0	0	0	0		
0	0	0	0	0	0	0	0	0	0	0		
7,606,625	9,366,447	6,112,078	4,795,042	3,492,673	3,177,158	15,480,104	5,430,979	7,863,148	5,301,919	5,813,850	0	0
120,988	142,999	113,977	103,170	62,012	50,529	241,794	80,784	130,302	74,680	84,086		
7,479,884	9,279,630	6,026,419	4,719,777	3,476,855	3,127,969	15,297,088	5,345,438	7,712,115	5,141,962	5,781,647		
2,719,781	2,487,501	1,792,385	1,005,825	1,020,850	864,567	5,253,409	1,731,536	2,129,766	2,589,762	2,615,083		
4,760,103	6,792,129	4,234,034	3,480,883	2,259,586	2,081,601	9,420,687	3,190,734	5,280,872	2,552,200	3,166,564		
126,741	86,817	85,659	75,265	15,818	49,189	183,016	85,541	151,033	159,957	32,203		
			0	0	0	0	0	0	0	0		
25,988,377	28,578,240	24,769,652	24,106,220	23,016,310	23,047,940	52,359,921	40,899,331	43,337,394	41,801,138	42,186,778	0	0

98	99	00	01	02	03	04	05	06	07	08	09	10
47.5	45.5	46.4	47.8	47.2	47.6	104.6	98.4	96.5	101.2	98.6	0.0	0.0
29.9	31.6	27.0	28.4	31.0	35.2	47.2	51.1	52.4	55.1	55.1	0.0	0.0
29.6	30.4	30.0	29.0	28.1	28.7	54.8	58.6	60.3	64.6	68.3	0.0	0.0
24.2	25.1	27.0	30.2	30.2	32.6	67.5	58.3	55.4	55.5	56.1	0.0	0.0
2.9	3.2	3.9	4.0	4.0	3.8	5.2	6.4	6.7	8.4	8.1	0.0	0.0
32.9	39.8	32.9	33.0	32.6	29.7	36.1	27.4	29.8	27.2	34.5	0.0	0.0
7.9	8.7	12.6	13.2	14.3	15.2	30.0	32.1	29.4	36.4	31.4	0.0	0.0
5.0	4.7	3.3	2.4	2.4	1.9	20.2	14.4	18.4	13.4	8.9	0.0	0.0
3.9	3.2	3.4	5.1	5.5	4.1	3.1	7.9	5.8	3.1	2.6	0.0	0.0
74.8	92.8	60.3	47.2	34.8	31.3	153.0	53.5	77.1	51.4	57.8	0.0	0.0
259.9	285.8	247.7	241.1	230.2	230.5	523.6	409.0	433.4	418.0	421.9	0.0	0.0

98	99	00	01	02	03	04	05	06	07	08	09	10
107.1	107.5	103.4	105.2	106.3	111.4	206.7	208.1	209.2	220.9	222.0	0.0	0.0
74.8	92.8	60.3	47.2	34.8	31.3	153.0	53.5	77.1	51.4	57.8	0.0	0.0

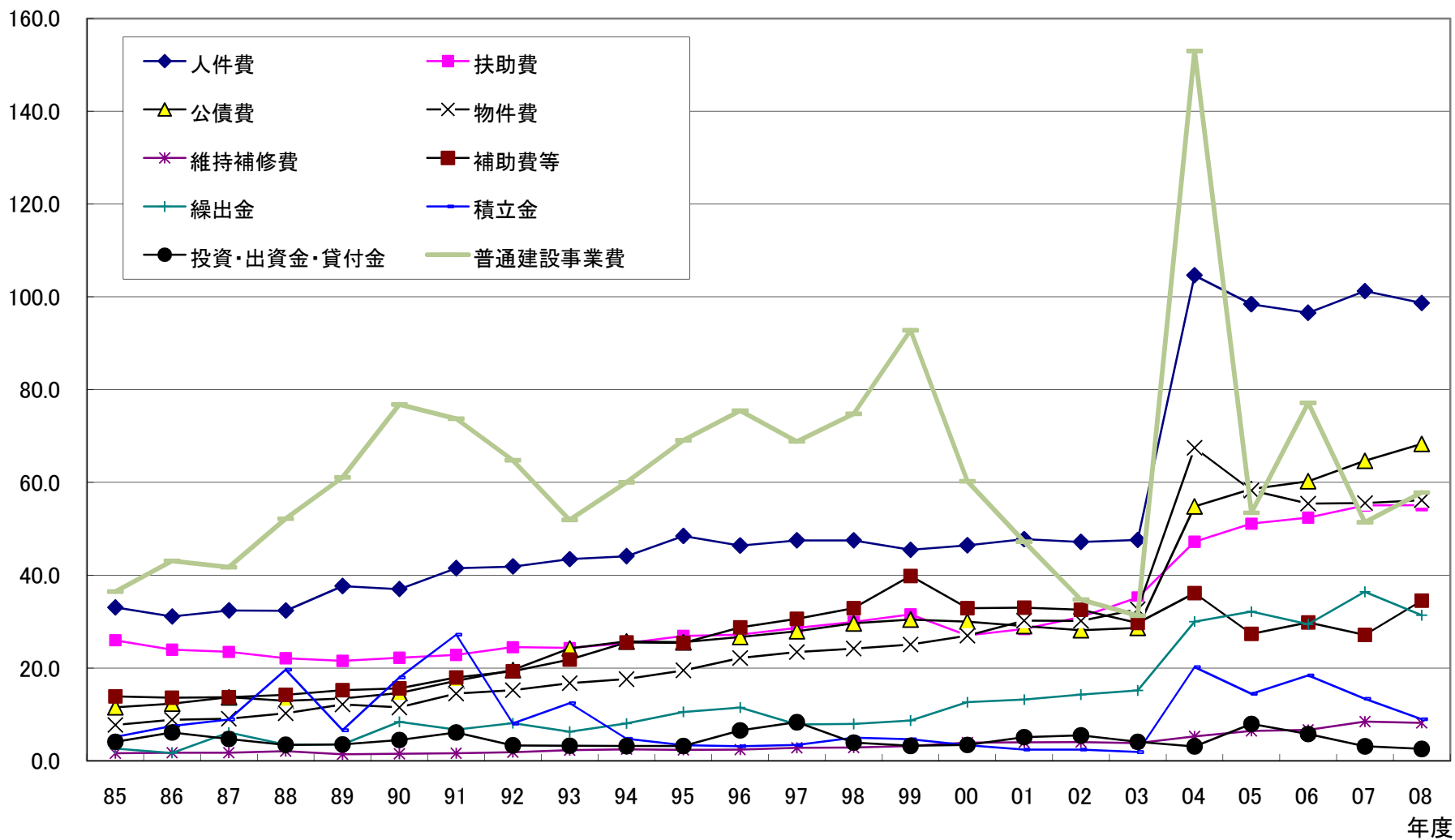
億円

6-1-1 性質別歳出の経年的推移



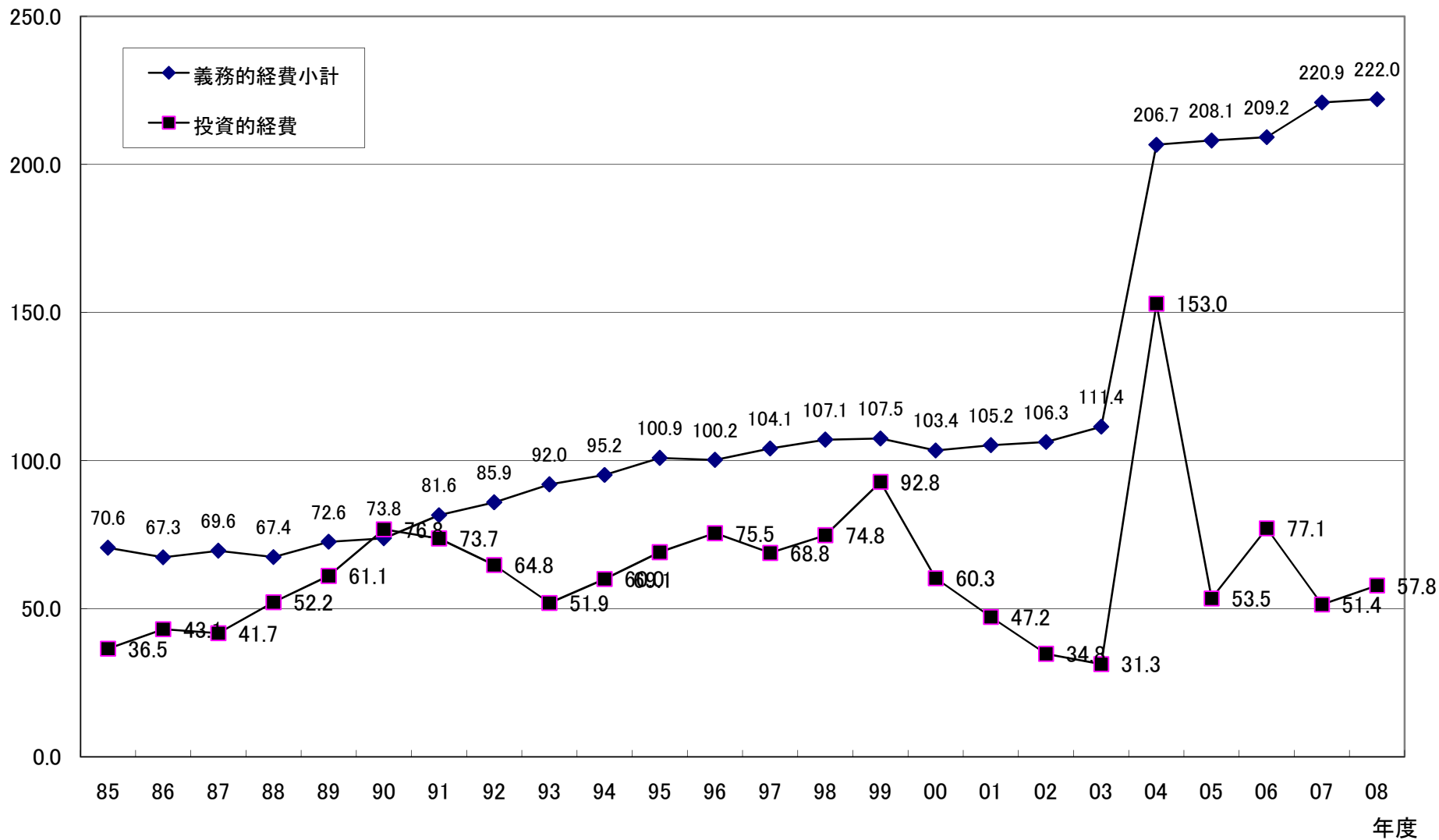
6-1-2 性質別歳出の経年的推移

億円



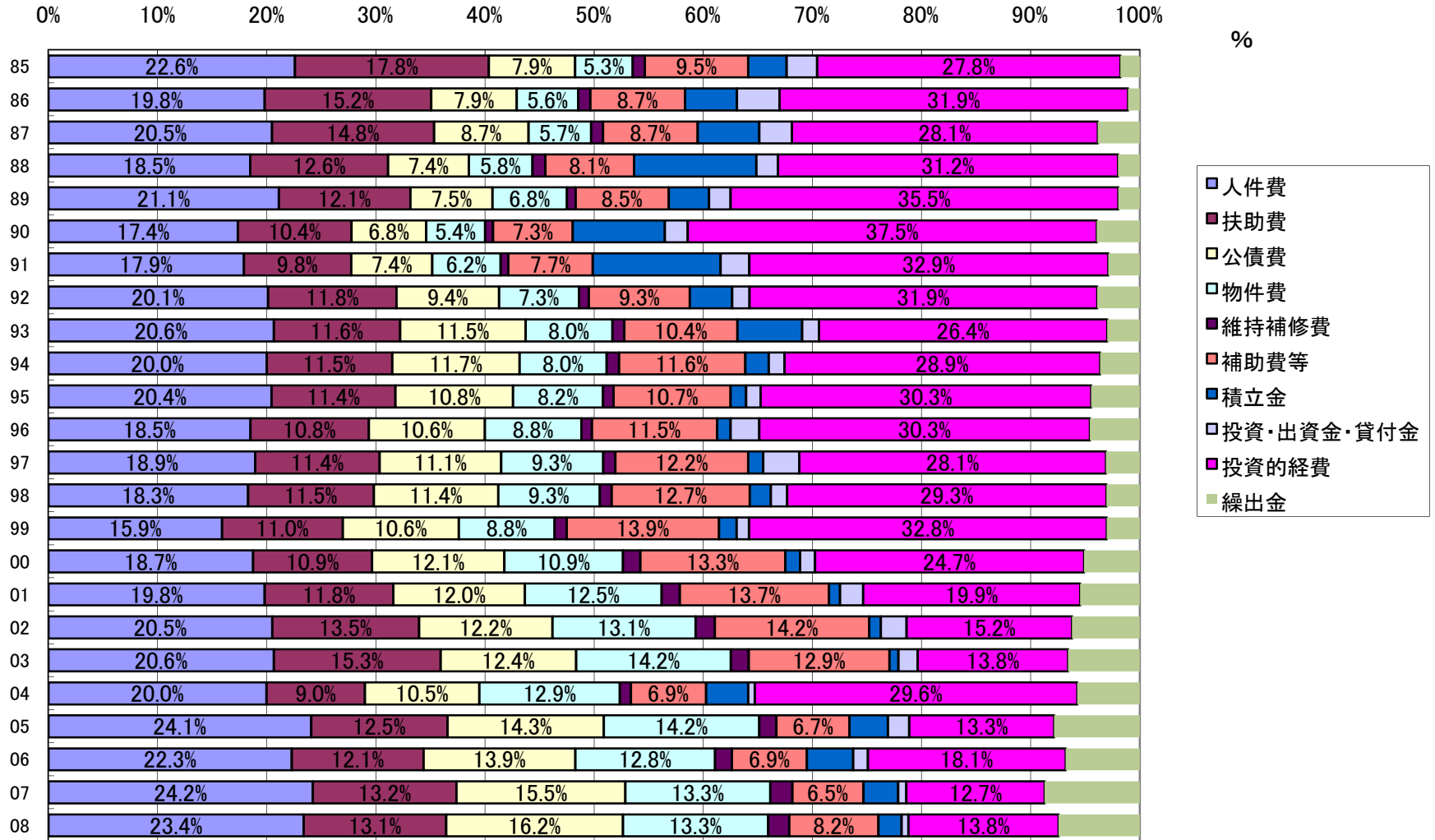
億円

6-1-3 義務的経費と投資的経費の経年的推移

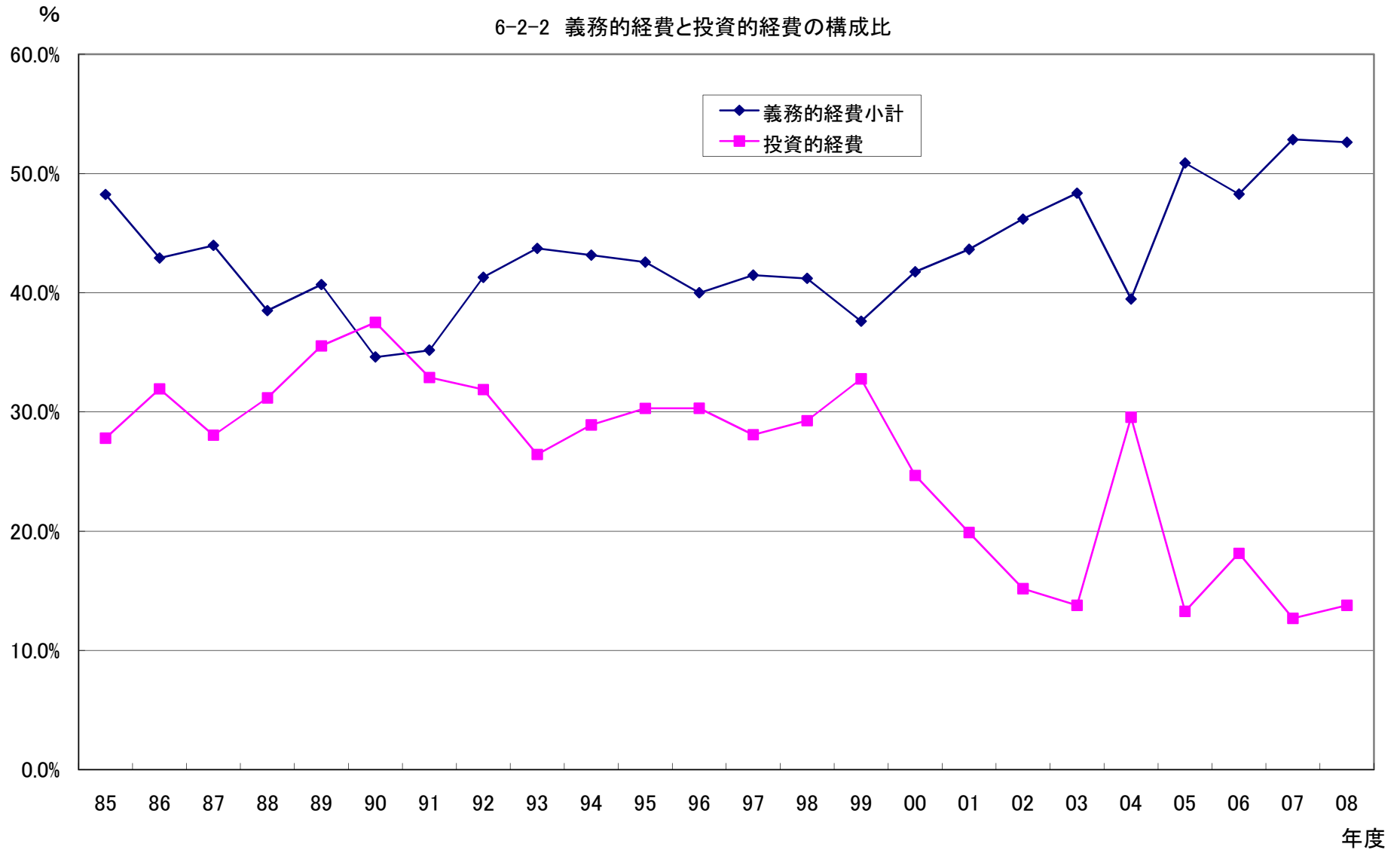


年度

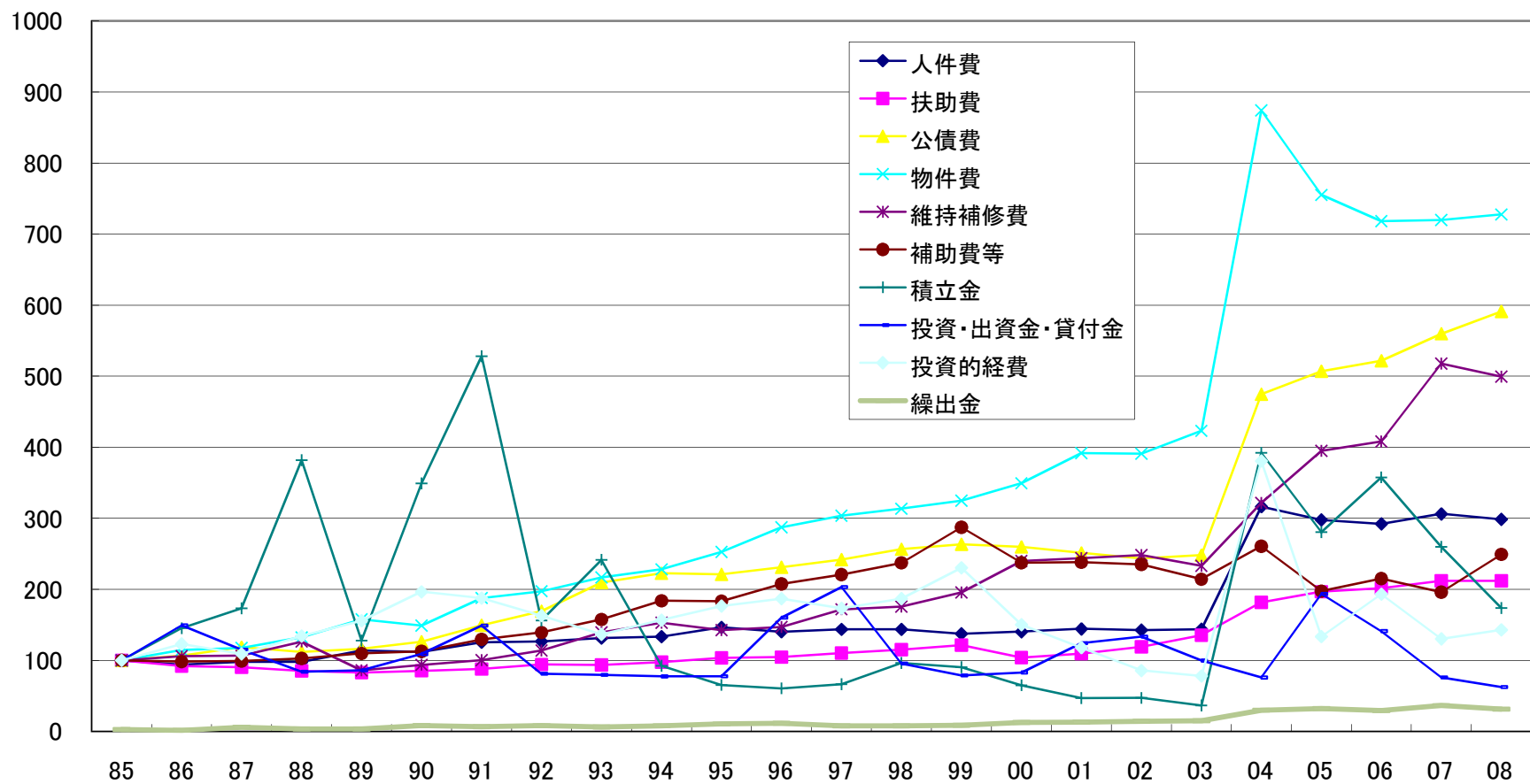
6-2-1 性質別歳出の構成比



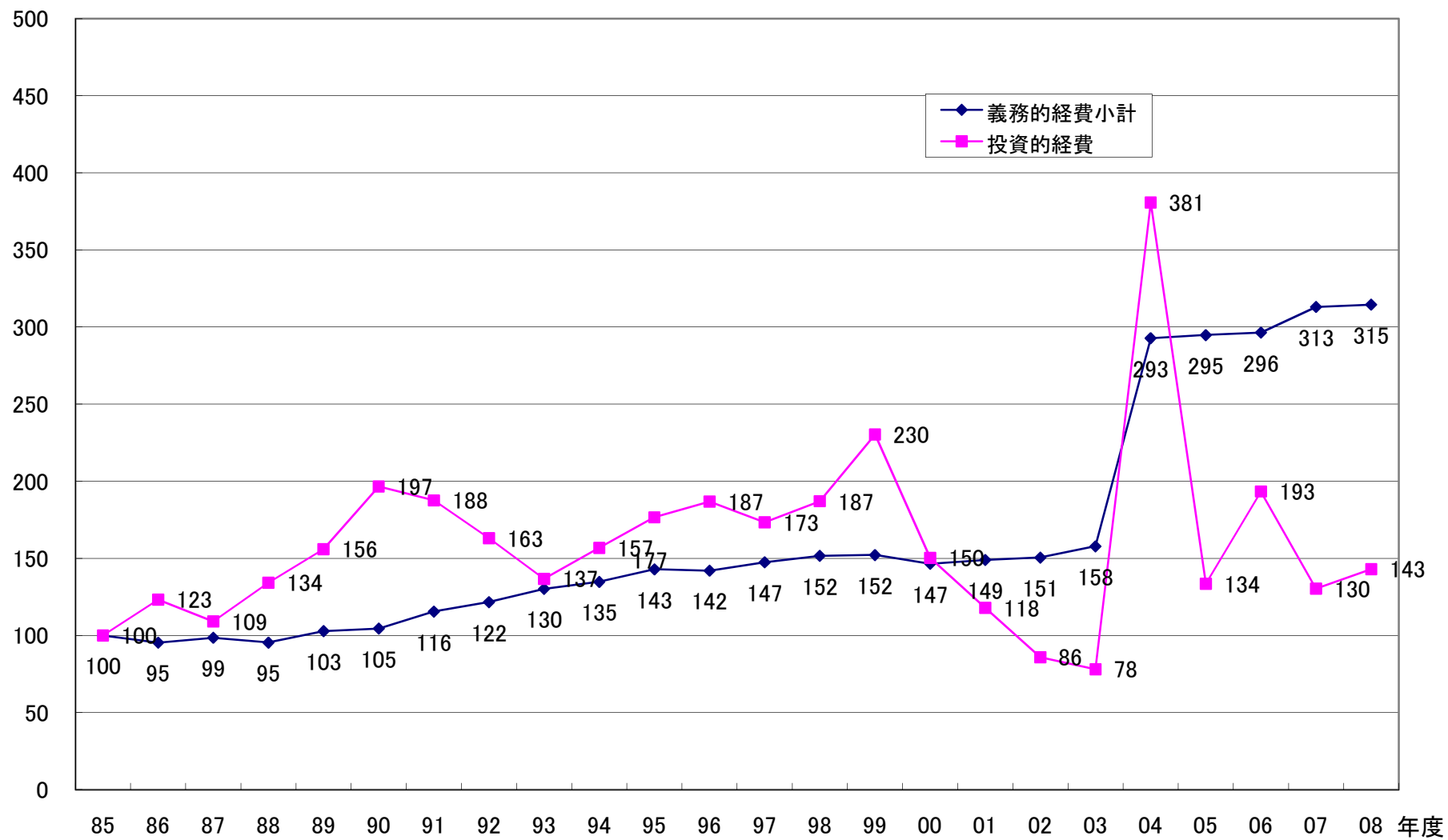
6-2-2 義務的経費と投資的経費の構成比



6-3-1 性質別歳出の伸び率



6-3-2 義務的経費と投資的経費の伸び率



年度	85	86	87	88	89	90	91	92	93	94	95	96	97
人件費	22.6%	19.8%	20.5%	18.5%	21.1%	17.4%	17.9%	20.1%	20.6%	20.0%	20.4%	18.5%	18.9%
うち職員給	15.3%	14.8%	14.6%	13.7%	14.0%	12.5%	12.1%	13.8%	14.2%	14.0%	13.3%	12.6%	12.8%
扶助費	17.8%	15.2%	14.8%	12.6%	12.1%	10.4%	9.8%	11.8%	11.6%	11.5%	11.4%	10.8%	11.4%
公債費	7.9%	7.9%	8.7%	7.4%	7.5%	6.8%	7.4%	9.4%	11.5%	11.7%	10.8%	10.6%	11.1%
元利償還金	7.8%	7.8%	8.6%	7.4%	7.5%	6.8%	7.4%	9.4%	11.5%	11.7%	10.8%	10.6%	11.1%
一時借入金利息	0.1%	0.0%	0.0%	0.0%	0.0%	0.0%	0.0%	0.0%	0.0%	0.0%	0.0%	0.0%	0.0%
義務的経費小計	48.2%	42.9%	44.0%	38.5%	40.7%	34.6%	35.2%	41.3%	43.7%	43.2%	42.6%	40.0%	41.5%
物件費	5.3%	5.6%	5.7%	5.8%	6.8%	5.4%	6.2%	7.3%	8.0%	8.0%	8.2%	8.8%	9.3%
維持補修費	1.1%	1.1%	1.1%	1.2%	0.8%	0.7%	0.7%	0.9%	1.1%	1.1%	1.0%	1.0%	1.1%
補助費等	9.5%	8.7%	8.7%	8.1%	8.5%	7.3%	7.7%	9.3%	10.4%	11.6%	10.7%	11.5%	12.2%
事務組合負担金(うち組合分)	5.4%	5.1%	5.2%	5.2%	5.4%	4.6%	4.5%	5.5%	6.2%	6.2%	5.8%	6.1%	6.3%
(うち組合分以外)	0.0%	0.0%	0.0%	0.0%	0.0%	0.0%	0.0%	0.0%	0.0%	0.0%	0.0%	0.0%	0.0%
繰出金	1.8%	1.1%	3.8%	2.0%	2.0%	3.9%	2.9%	3.9%	3.0%	3.6%	4.4%	4.6%	3.1%
積立金	3.5%	4.8%	5.6%	11.2%	3.7%	8.4%	11.7%	3.9%	5.9%	2.2%	1.4%	1.2%	1.4%
投資・出資金・貸付金	2.8%	3.9%	3.0%	2.0%	2.0%	2.1%	2.6%	1.6%	1.5%	1.4%	1.3%	2.6%	3.3%
投資及び出資金	0.0%	0.0%	0.0%	0.0%	0.0%	0.0%	0.0%	0.0%	0.0%	0.0%	0.0%	0.0%	0.0%
貸付金	0.0%	0.0%	0.0%	0.0%	0.0%	0.0%	0.0%	0.0%	0.0%	0.0%	0.0%	0.0%	0.0%
前年度繰上充用金	0.0%	0.0%	0.0%	0.0%	0.0%	0.0%	0.0%	0.0%	0.0%	0.0%	0.0%	0.0%	0.0%
投資的経費	27.8%	31.9%	28.1%	31.2%	35.5%	37.5%	32.9%	31.9%	26.4%	28.9%	30.3%	30.3%	28.1%
うち人件費	0.3%	0.3%	0.5%	0.5%	0.6%	0.6%	0.6%	0.7%	0.6%	0.5%	0.5%	0.5%	0.5%
普通建設事業費	24.9%	27.5%	26.4%	29.8%	34.2%	36.0%	31.8%	31.1%	24.7%	27.2%	29.1%	30.1%	27.4%
補助	12.5%	14.8%	11.8%	7.3%	8.4%	9.8%	10.0%	8.4%	7.7%	9.2%	11.3%	12.2%	9.7%
単独	11.6%	11.7%	13.2%	21.1%	25.8%	26.2%	21.7%	22.7%	16.9%	18.0%	17.9%	17.9%	17.8%
うち単独+県営	0.0%	0.0%	0.0%	0.0%	0.0%	0.0%	0.0%	0.0%	0.0%	0.0%	0.0%	0.0%	0.0%
災害普及事業費	1.3%	2.0%	0.4%	0.4%	0.5%	0.8%	0.6%	0.4%	1.5%	1.5%	0.9%	0.2%	0.7%
失業対策事業費	1.6%	2.5%	1.3%	1.0%	0.9%	0.6%	0.5%	0.3%	0.3%	0.2%	0.3%	0.0%	0.0%
合計	100.0%	100.0%	100.0%	100.0%	100.0%	100.0%	100.0%	100.0%	100.0%	100.0%	100.0%	100.0%	100.0%

	85	86	87	88	89	90	91	92	93	94	95	96	97
人件費	22.6%	19.8%	20.5%	18.5%	21.1%	17.4%	17.9%	20.1%	20.6%	20.0%	20.4%	18.5%	18.9%
扶助費	17.8%	15.2%	14.8%	12.6%	12.1%	10.4%	9.8%	11.8%	11.6%	11.5%	11.4%	10.8%	11.4%
公債費	7.9%	7.9%	8.7%	7.4%	7.5%	6.8%	7.4%	9.4%	11.5%	11.7%	10.8%	10.6%	11.1%
物件費	5.3%	5.6%	5.7%	5.8%	6.8%	5.4%	6.2%	7.3%	8.0%	8.0%	8.2%	8.8%	9.3%
維持補修費	1.1%	1.1%	1.1%	1.2%	0.8%	0.7%	0.7%	0.9%	1.1%	1.1%	1.0%	1.0%	1.1%
補助費等	9.5%	8.7%	8.7%	8.1%	8.5%	7.3%	7.7%	9.3%	10.4%	11.6%	10.7%	11.5%	12.2%
繰出金	1.8%	1.1%	3.8%	2.0%	2.0%	3.9%	2.9%	3.9%	3.0%	3.6%	4.4%	4.6%	3.1%
積立金	3.5%	4.8%	5.6%	11.2%	3.7%	8.4%	11.7%	3.9%	5.9%	2.2%	1.4%	1.2%	1.4%
投資・出資金・貸付金	2.8%	3.9%	3.0%	2.0%	2.0%	2.1%	2.6%	1.6%	1.5%	1.4%	1.3%	2.6%	3.3%
投資的経費	27.8%	31.9%	28.1%	31.2%	35.5%	37.5%	32.9%	31.9%	26.4%	28.9%	30.3%	30.3%	28.1%
合計	100.0%	100.0%	100.0%	100.0%	100.0%	100.0%	100.0%	100.0%	100.0%	100.0%	100.0%	100.0%	100.0%

	85	86	87	88	89	90	91	92	93	94	95	96	97
義務的経費小計	48.2%	42.9%	44.0%	38.5%	40.7%	34.6%	35.2%	41.3%	43.7%	43.2%	42.6%	40.0%	41.5%

投資的經費	27.8%	31.9%	28.1%	31.2%	35.5%	37.5%	32.9%	31.9%	26.4%	28.9%	30.3%	30.3%	28.1%
-------	-------	-------	-------	-------	-------	-------	-------	-------	-------	-------	-------	-------	-------

98	99	00	01	02	03	04	05	06	07	08	09	10
18.3%	15.9%	18.7%	19.8%	20.5%	20.6%	20.0%	24.1%	22.3%	24.2%	23.4%	#####	#####
12.6%	11.1%	12.9%	13.2%	13.5%	12.9%	12.8%	16.7%	15.3%	16.1%	15.3%	#####	#####
11.5%	11.0%	10.9%	11.8%	13.5%	15.3%	9.0%	12.5%	12.1%	13.2%	13.1%	#####	#####
11.4%	10.6%	12.1%	12.0%	12.2%	12.4%	10.5%	14.3%	13.9%	15.5%	16.2%	#####	#####
11.4%	10.6%	12.1%	12.0%	12.2%	12.4%	10.5%	14.3%	13.9%	15.5%	16.2%	#####	#####
0.0%	0.0%	0.0%	0.0%	0.0%	0.0%	0.0%	0.0%	0.0%	0.0%	0.0%	#####	#####
41.2%	37.6%	41.8%	43.6%	46.2%	48.4%	39.5%	50.9%	48.3%	52.9%	52.6%	#####	#####
9.3%	8.8%	10.9%	12.5%	13.1%	14.2%	12.9%	14.2%	12.8%	13.3%	13.3%	#####	#####
1.1%	1.1%	1.6%	1.7%	1.8%	1.7%	1.0%	1.6%	1.5%	2.0%	1.9%	#####	#####
12.7%	13.9%	13.3%	13.7%	14.2%	12.9%	6.9%	6.7%	6.9%	6.5%	8.2%	#####	#####
7.0%	7.3%	7.7%	7.8%	8.0%	6.9%	0.8%	1.0%	1.4%	1.3%	1.4%	#####	#####
0.0%	0.0%	0.0%	0.0%	0.0%	0.0%	0.0%	0.0%	0.0%	0.0%	0.0%	#####	#####
3.1%	3.0%	5.1%	5.5%	6.2%	6.6%	5.7%	7.9%	6.8%	8.7%	7.4%	#####	#####
1.9%	1.6%	1.4%	1.0%	1.1%	0.8%	3.9%	3.5%	4.2%	3.2%	2.1%	#####	#####
1.5%	1.1%	1.4%	2.1%	2.4%	1.8%	0.6%	1.9%	1.3%	0.7%	0.6%	#####	#####
0.0%	0.0%	0.0%	0.0%	0.0%	0.0%	0.0%	0.0%	0.0%	0.0%	0.0%	#####	#####
0.0%	0.0%	0.0%	0.0%	0.0%	0.0%	0.0%	0.0%	0.0%	0.0%	0.0%	#####	#####
0.0%	0.0%	0.0%	0.0%	0.0%	0.0%	0.0%	0.0%	0.0%	0.0%	0.0%	#####	#####
29.3%	32.8%	24.7%	19.9%	15.2%	13.8%	29.6%	13.3%	18.1%	12.7%	13.8%	#####	#####
0.5%	0.5%	0.5%	0.4%	0.3%	0.2%	0.5%	0.2%	0.3%	0.2%	0.2%	#####	#####
28.8%	32.5%	24.3%	19.6%	15.1%	13.6%	29.2%	13.1%	17.8%	12.3%	13.7%	#####	#####
10.5%	8.7%	7.2%	4.2%	4.4%	3.8%	10.0%	4.2%	4.9%	6.2%	6.2%	#####	#####
18.3%	23.8%	17.1%	14.4%	9.8%	9.0%	18.0%	7.8%	12.2%	6.1%	7.5%	#####	#####
0.0%	0.0%	0.0%	0.0%	0.0%	0.0%	0.0%	0.0%	0.0%	0.0%	0.0%	#####	#####
0.5%	0.3%	0.3%	0.3%	0.1%	0.2%	0.3%	0.2%	0.3%	0.4%	0.1%	#####	#####
0.0%	0.0%	0.0%	0.0%	0.0%	0.0%	0.0%	0.0%	0.0%	0.0%	0.0%	#####	#####
100.0%	100.0%	100.0%	100.0%	100.0%	100.0%	100.0%	100.0%	100.0%	100.0%	100.0%	#####	#####

98	99	00	01	02	03	04	05	06	07	08	09	10
18.3%	15.9%	18.7%	19.8%	20.5%	20.6%	20.0%	24.1%	22.3%	24.2%	23.4%	#####	#####
11.5%	11.0%	10.9%	11.8%	13.5%	15.3%	9.0%	12.5%	12.1%	13.2%	13.1%	#####	#####
11.4%	10.6%	12.1%	12.0%	12.2%	12.4%	10.5%	14.3%	13.9%	15.5%	16.2%	#####	#####
9.3%	8.8%	10.9%	12.5%	13.1%	14.2%	12.9%	14.2%	12.8%	13.3%	13.3%	#####	#####
1.1%	1.1%	1.6%	1.7%	1.8%	1.7%	1.0%	1.6%	1.5%	2.0%	1.9%	#####	#####
12.7%	13.9%	13.3%	13.7%	14.2%	12.9%	6.9%	6.7%	6.9%	6.5%	8.2%	#####	#####
3.1%	3.0%	5.1%	5.5%	6.2%	6.6%	5.7%	7.9%	6.8%	8.7%	7.4%	#####	#####
1.9%	1.6%	1.4%	1.0%	1.1%	0.8%	3.9%	3.5%	4.2%	3.2%	2.1%	#####	#####
1.5%	1.1%	1.4%	2.1%	2.4%	1.8%	0.6%	1.9%	1.3%	0.7%	0.6%	#####	#####
29.3%	32.8%	24.7%	19.9%	15.2%	13.8%	29.6%	13.3%	18.1%	12.7%	13.8%	#####	#####
100.0%	100.0%	100.0%	100.0%	100.0%	100.0%	100.0%	100.0%	100.0%	100.0%	100.0%	#####	#####

98	99	00	01	02	03	04	05	06	07	08	09	10
41.2%	37.6%	41.8%	43.6%	46.2%	48.4%	39.5%	50.9%	48.3%	52.9%	52.6%	#####	#####

29.3%	32.8%	24.7%	19.9%	15.2%	13.8%	29.6%	13.3%	18.1%	12.7%	13.8%	#####	#####
-------	-------	-------	-------	-------	-------	-------	-------	-------	-------	-------	-------	-------

年度	85	86	87	88	89	90	91	92	93	94	95	96	97	98	99	00	01	02	03	04	05	06	07
人件費	100	94	98	98	114	112	126	127	131	133	147	140	144	144	138	140	144	143	144	317	298	292	306
うち職員給	100	104	103	107	111	119	126	129	134	1381	141	142	144	146	142	143	143	139	133	300	305	297	301
扶助費	100	92	90	85	83	85	88	94	94	98	104	105	110	115	122	104	109	119	135	182	197	202	212
公債費	100	107	119	112	116	126	149	169	210	223	221	231	242	257	264	260	251	244	248	475	507	522	560
元利償還金	100	107	119	112	117	127	150	171	211	224	223	233	244	258	265	262	253	245	250	478	511	526	564
一時借入金利息	100	40	42	35	22	6	19	0	0	0	0	0	3	11	0	0	0	2	7	45	0	0	9
義務的経費小計	100	95	99	95	103	105	116	122	130	135	143	142	147	152	152	147	149	151	158	293	295	296	313
物件費	100	115	118	132	158	149	188	197	217	228	253	287	304	313	325	349	392	391	423	874	755	718	720
維持補修費	100	106	107	126	86	94	100	114	140	153	143	147	172	176	196	240	244	248	233	322	395	408	518
補助費等	100	98	99	103	110	113	130	139	158	184	183	208	221	237	287	237	238	235	214	261	197	215	196
ち一部事務組合負担金(うち組合分)	100	102	104	115	123	123	133	144	166	172	175	193	199	230	266	240	237	233	202	50	53	77	70
(うち組合分以外)	#####	#####	#####	#####	#####	#####	#####	#####	#####	#####	#####	#####	#####	#####	#####	#####	#####	#####	#####	#####	#####	#####	#####
繰出金	100	65	233	133	135	322	258	310	240	308	404	439	299	304	333	483	505	547	580	1149	1231	1127	1395
積立金	100	145	173	382	128	349	528	156	242	92	65	61	67	96	90	65	47	47	37	392	281	358	260
投資・出資金・貸付金	100	149	115	84	86	109	149	81	80	78	78	160	203	96	79	83	124	133	100	76	194	141	76
投資及び出資金	#####	#####	#####	#####	#####	#####	#####	#####	#####	#####	#####	#####	#####	#####	#####	#####	#####	#####	#####	#####	#####	#####	#####
貸付金	#####	#####	#####	#####	#####	#####	#####	#####	#####	#####	#####	#####	#####	#####	#####	#####	#####	#####	#####	#####	#####	#####	#####
前年度繰上充用金	#####	#####	#####	#####	#####	#####	#####	#####	#####	#####	#####	#####	#####	#####	#####	#####	#####	#####	#####	#####	#####	#####	#####
投資的経費	100	123	109	134	156	197	188	163	137	157	177	187	173	187	230	150	118	86	78	381	134	193	130
うち人件費	100	115	191	200	252	298	323	346	292	282	285	284	283	286	338	269	244	146	119	571	191	308	176
普通建設事業費	100	118	114	143	167	211	202	178	142	165	189	207	189	205	254	165	129	95	86	419	147	211	141
補助	100	127	102	70	82	114	128	96	89	111	146	167	133	149	136	98	55	56	47	287	95	117	142
単独	100	108	124	219	272	330	298	279	211	235	250	265	263	281	401	250	206	134	123	557	189	312	151
うち単独+県営	#####	#####	#####	#####	#####	#####	#####	#####	#####	#####	#####	#####	#####	#####	#####	#####	#####	#####	#####	#####	#####	#####	#####
災害普及事業費	100	166	37	34	43	96	72	45	167	170	113	27	88	67	46	45	40	8	26	97	45	80	85
失業対策事業費	100	169	86	77	67	60	53	31	24	22	26	0	0	0	0	0	0	0	0	0	0	0	0
合計	100	107	108	120	122	146	159	142	144	151	162	171	172	178	195	169	165	157	158	358	280	296	286

	85	86	87	88	89	90	91	92	93	94	95	96	97	98	99	00	01	02	03	04	05	06	07
人件費	100	94	98	98	114	112	126	127	131	133	147	140	144	144	138	140	144	143	144	317	298	292	306
扶助費	100	92	90	85	83	85	88	94	94	98	104	105	110	115	122	104	109	119	135	182	197	202	212
公債費	100	107	119	112	116	126	149	169	210	223	221	231	242	257	264	260	251	244	248	475	507	522	560
物件費	100	115	118	132	158	149	188	197	217	228	253	287	304	313	325	349	392	391	423	874	755	718	720
維持補修費	100	106	107	126	86	94	100	114	140	153	143	147	172	176	196	240	244	248	233	322	395	408	518
補助費等	100	98	99	103	110	113	130	139	158	184	183	208	221	237	287	237	238	235	214	261	197	215	196
繰出金	100	65	233	133	135	322	258	310	240	308	404	439	299	304	333	483	505	547	580	1149	1231	1127	1395
積立金	100	145	173	382	128	349	528	156	242	92	65	61	67	96	90	65	47	47	37	392	281	358	260
投資・出資金・貸付金	100	149	115	84	86	109	149	81	80	78	78	160	203	96	79	83	124	133	100	76	194	141	76
投資的経費	100	123	109	134	156	197	188	163	137	157	177	187	173	187	230	150	118	86	78	381	134	193	130
合計	100	107	108	120	122	146	159	142	144	151	162	171	172	178	195	169	165	157	158	358	280	296	286

	85	86	87	88	89	90	91	92	93	94	95	96	97	98	99	00	01	02	03	04	05	06	07
義務的経費小計	100	95	99	95	103	105	116	122	130	135	143	142	147	152	152	147	149	151	158	293	295	296	313
投資的経費	100	123	109	134	156	197	188	163	137	157	177	187	173	187	230	150	118	86	78	381	134	193	130

08	09	10
298	0	0
289	0	0
212	0	0
591	0	0
595	0	0
0	0	0
315	0	0
728	0	0
499	0	0
249	0	0
75	0	0
#####	#####	#####
1202	0	0
174	0	0
62	0	0
#####	#####	#####
#####	#####	#####
#####	#####	#####
143	0	0
199	0	0
159	0	0
143	0	0
187	0	0
#####	#####	#####
17	0	0
0	0	0
288	0	0

08	09	10
298	0	0
212	0	0
591	0	0
728	0	0
499	0	0
249	0	0
1202	0	0
174	0	0
62	0	0
143	0	0
288	0	0

08	09	10
315	0	0
143	0	0