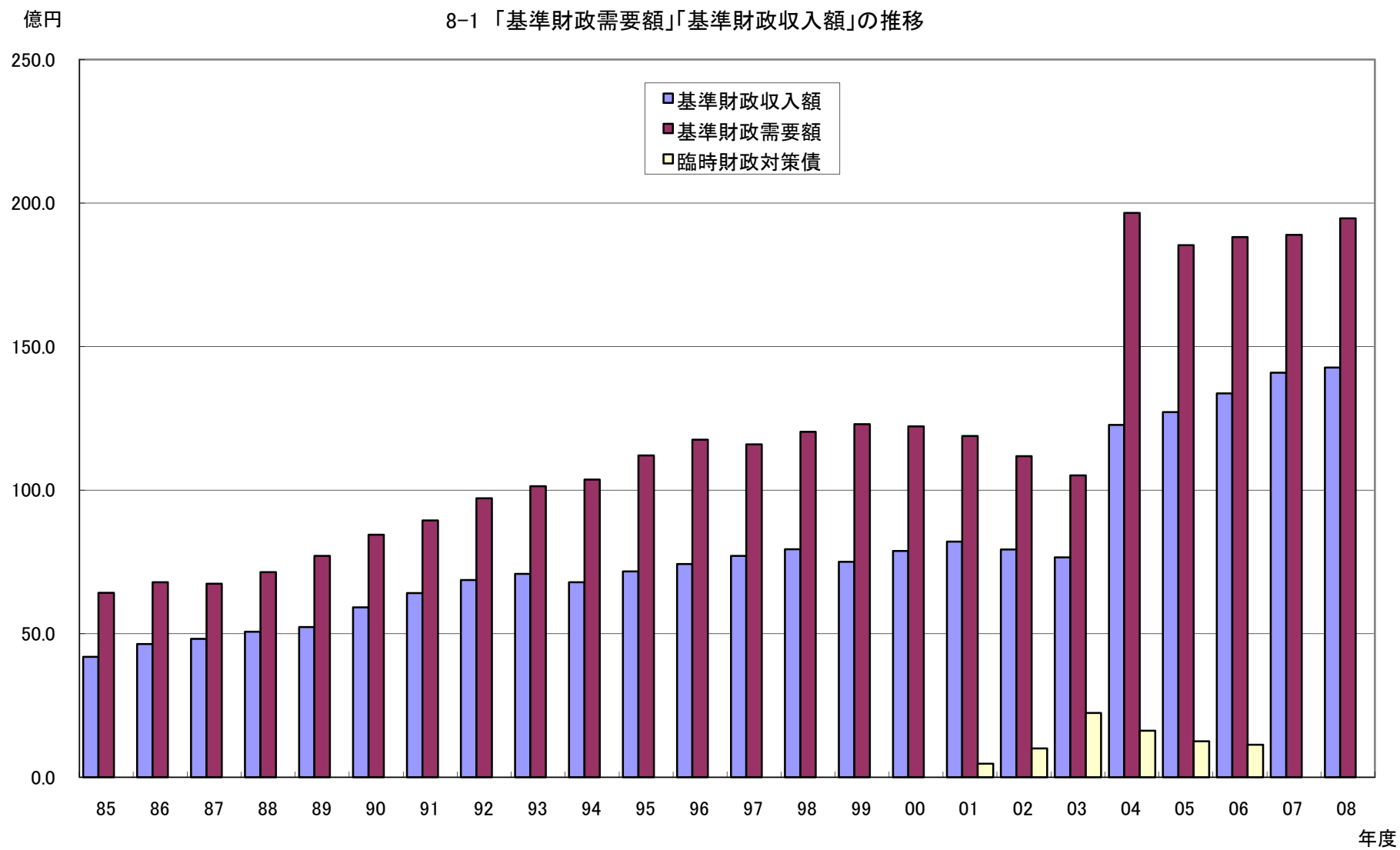




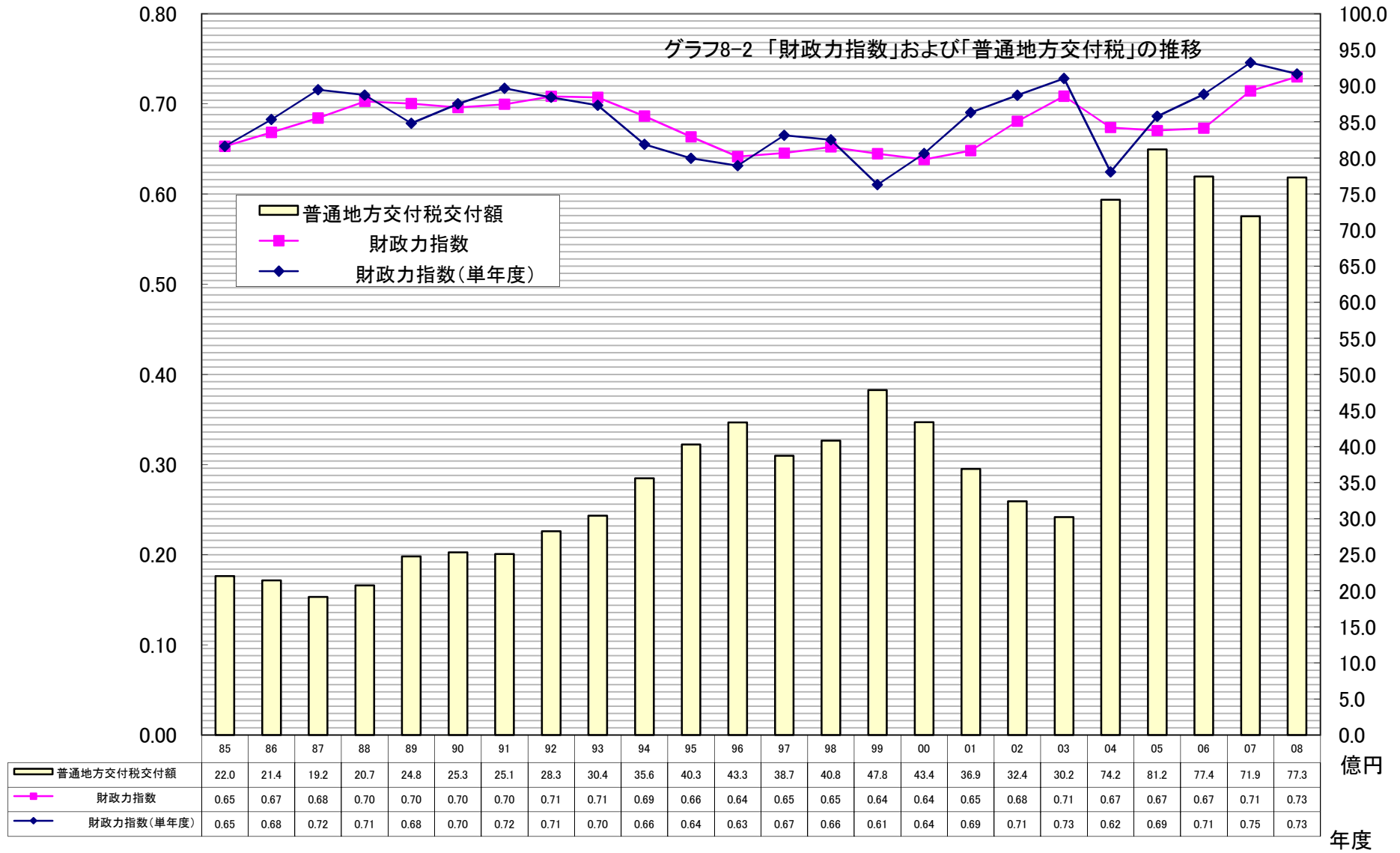


07	08	09	10
14,090,191	14,273,729		
336	340	0	0
18,894,217	19,467,217		
294	303	0	0
25,423,051	26,065,968		
329	337	0	0
0.71	0.73	0.74	0.733
0.75	0.73	#DIV/0!	#DIV/0!
7,191,037	7,730,697		
18.4	16.8		
16.5	16.5		
28,858,398	27,652,721		
281	269	0	0
4,819,003	5,024,932	0	0
8,179	8,528	0	0
550,902	454,741		
107,588	93,797		
4,160,513	4,476,394		
8,494,686	8,444,243	0	0
210	208	0	0
2,850,272	2,740,362		
143	137	0	0
0	0		
5,644,414	5,703,881		
33,677,401	32,677,653	0	0
326	317	0	0
132.5%	125.4%	#DIV/0!	#DIV/0!
25,182,715	24,233,410	0	0
402	386	0	0
99%	93%	#DIV/0!	#DIV/0!

グラフ8-1

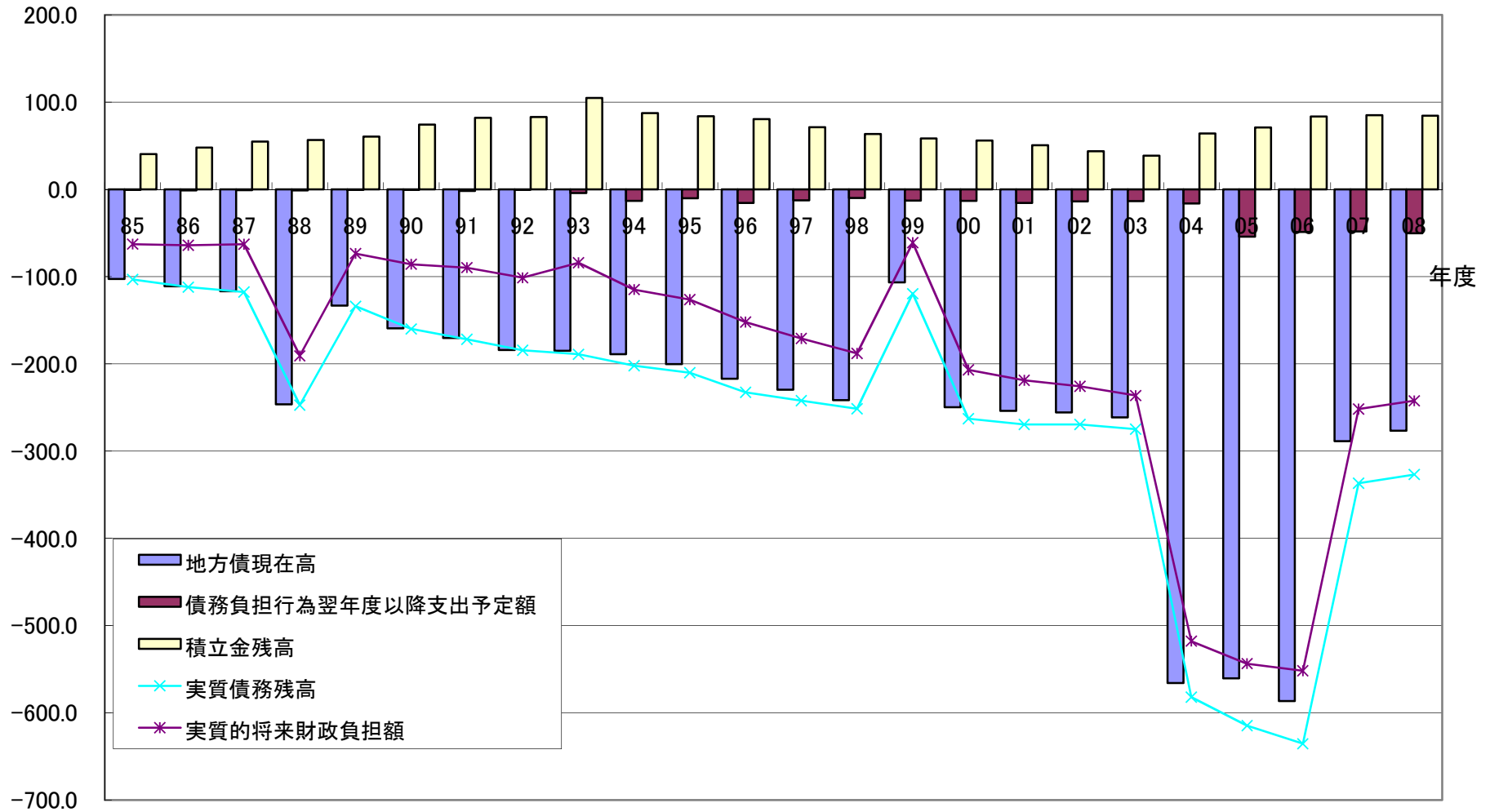


グラフ8-2



億円

グラフ8-3 「地方債」「債務負担行為」「積立金」



グラフ8-4 実質債務残高比率・実質的将来財政負担額比率

